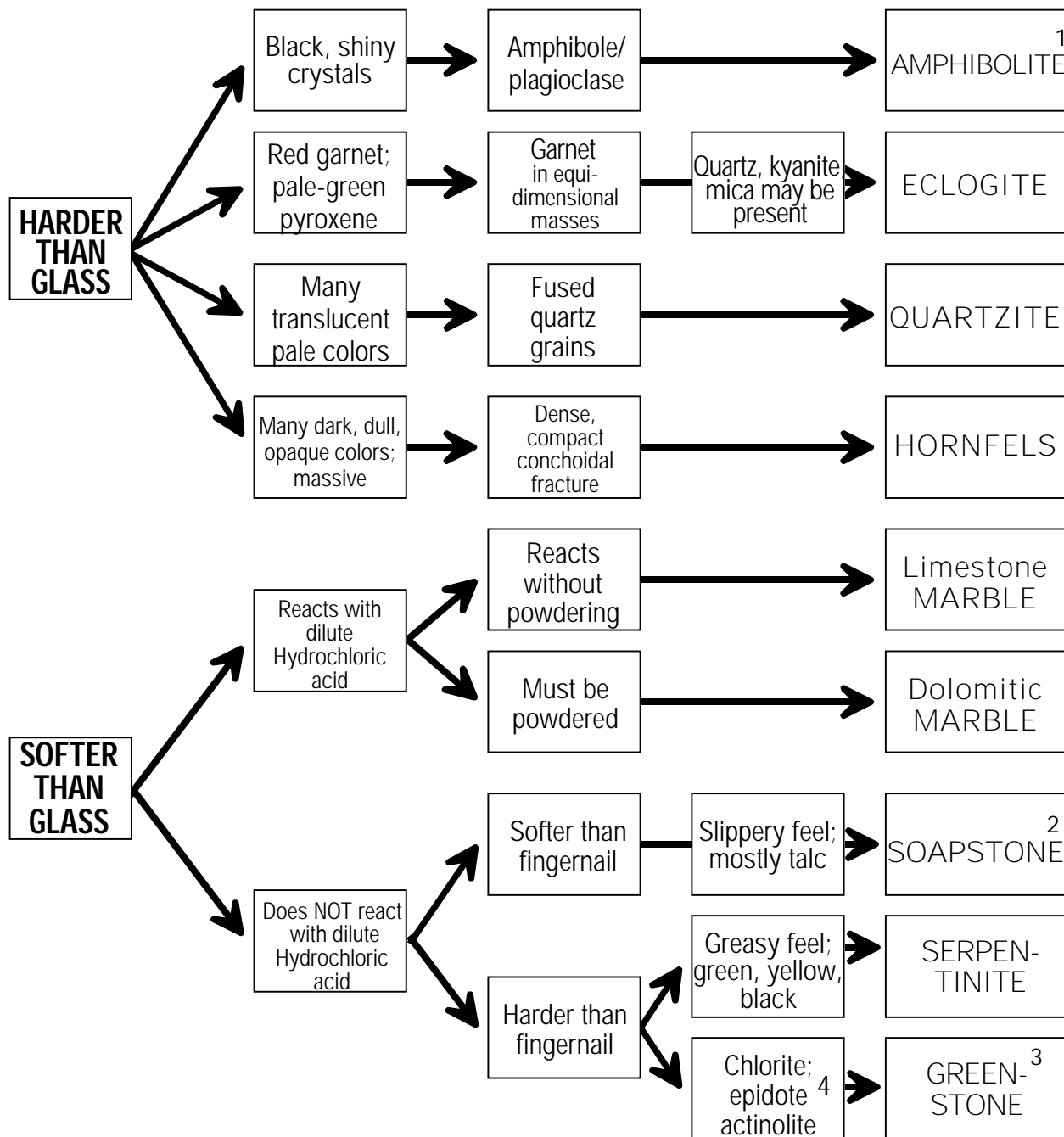


GRANULAR METAMORPHIC IDENTIFICATION KEY



1 Amphibolite is usually foliated, but some specimens may appear granular.

2 May be weakly foliated.

3 Greenstone is usually well foliated, but massive varieties exist.

4 Epidote is pale green. Often it is finely disseminated in the rock so individual crystals cannot be seen. Look for pale-green patches within the darker green chlorite.