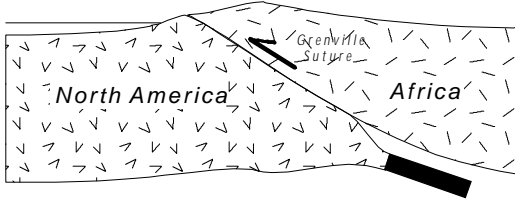


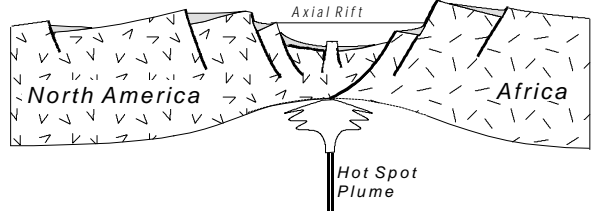
Divided Into Fourteen Stages A - M

Lynn S. Fichter, 1993

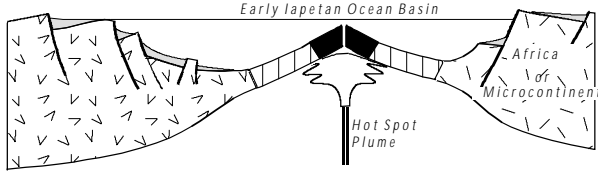
A - Proterozoic (1.2 bya) (Protolith to 1.8)



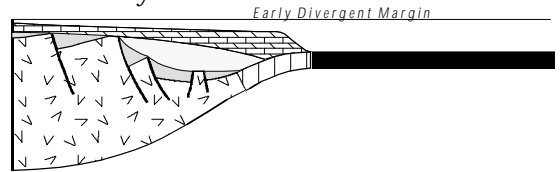
B - Late Proterozoic



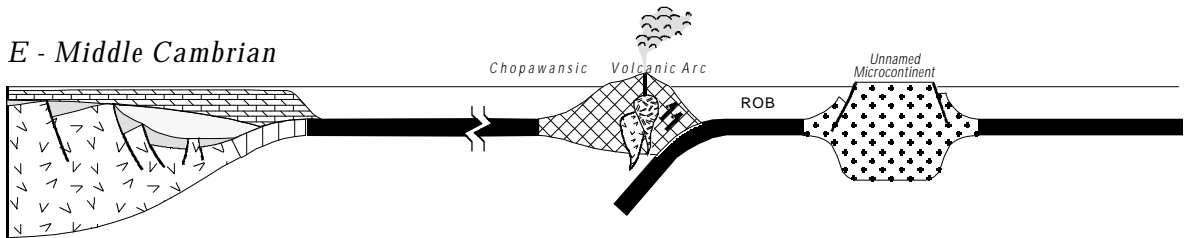
C - Earliest Cambrian



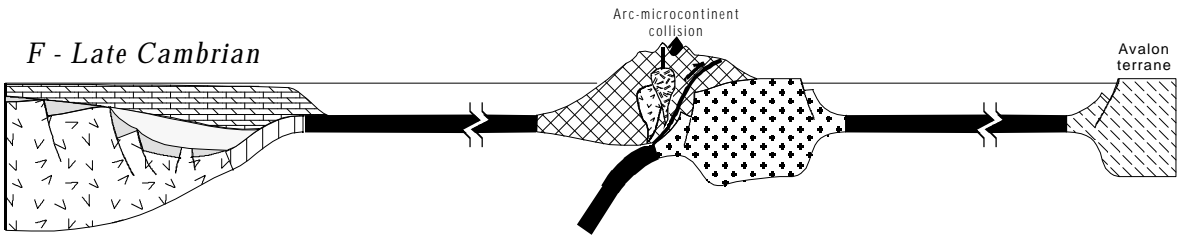
D - Early Cambrian



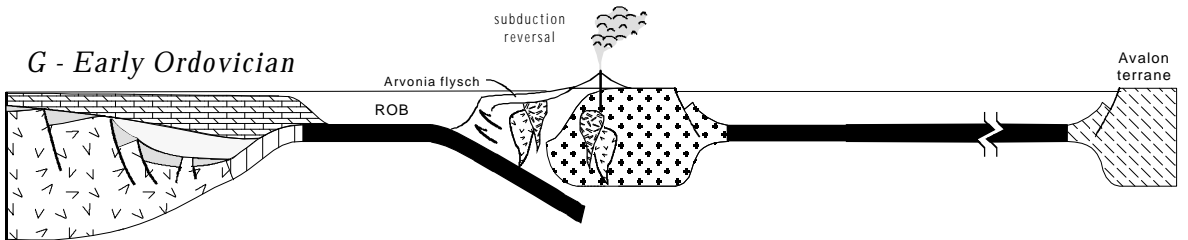
E - Middle Cambrian



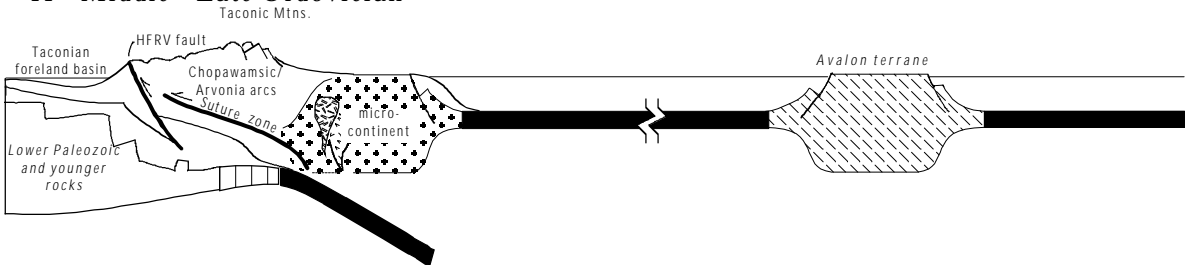
F - Late Cambrian



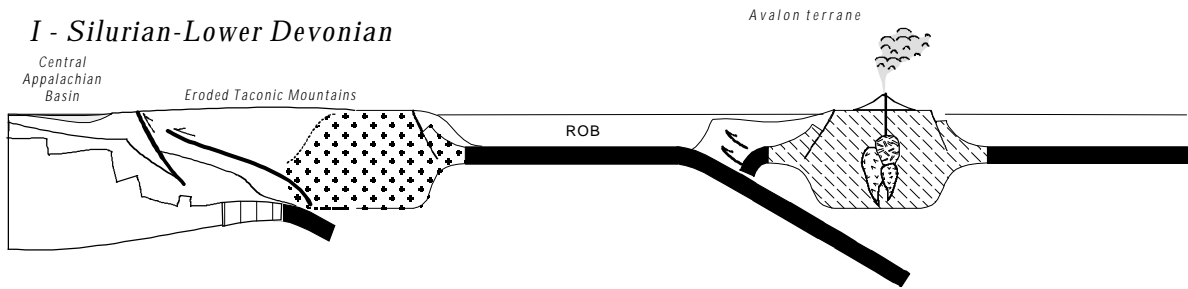
G - Early Ordovician



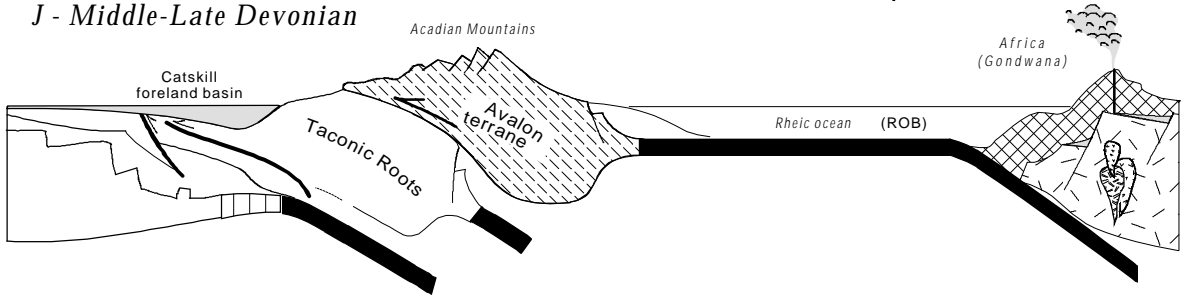
H - Middle - Late Ordovician



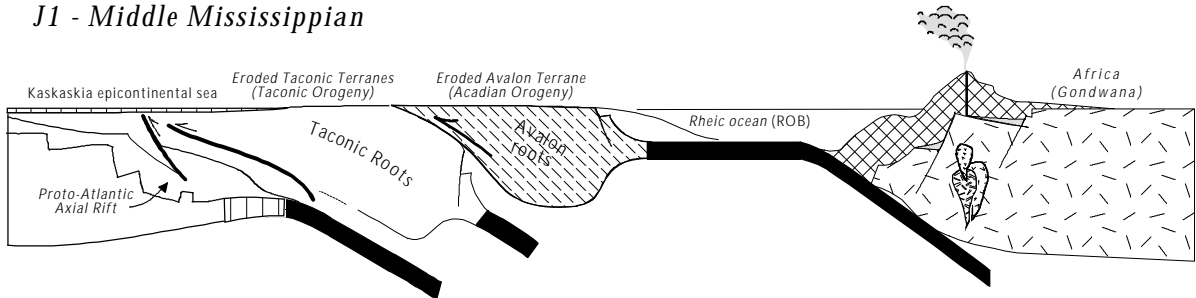
I - Silurian-Lower Devonian



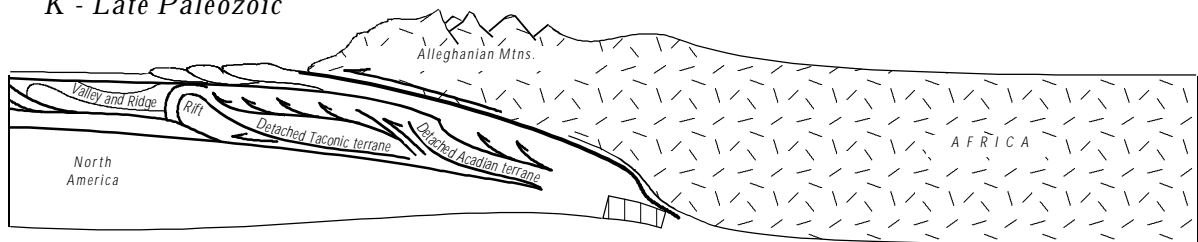
J - Middle-Late Devonian



J1 - Middle Mississippian

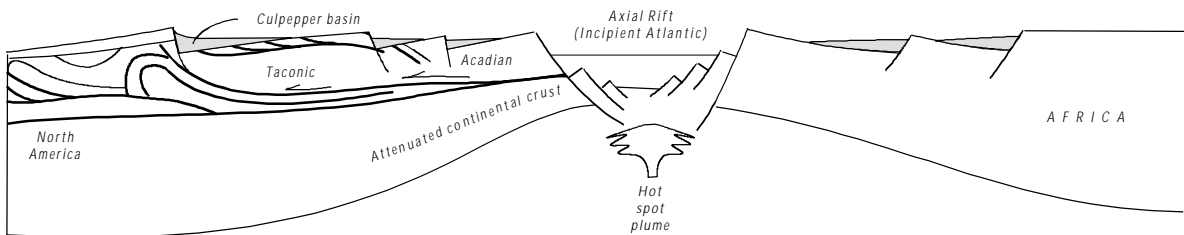


K - Late Paleozoic

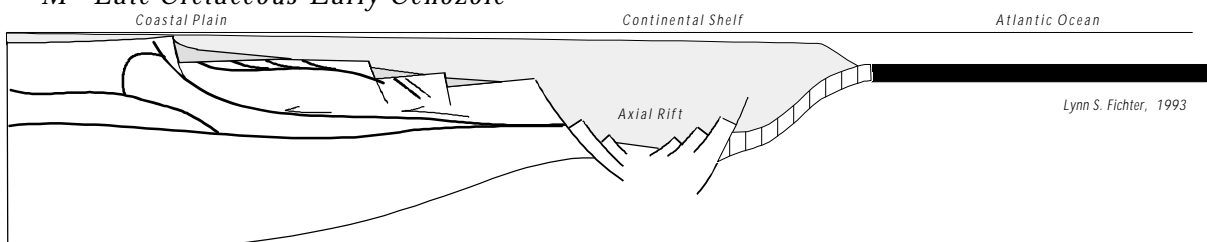


Lynn S. Fichter, 1993

L - Triassic-Lower Jurassic



M - Late Cretaceous-Early Cenozoic



Lynn S. Fichter, 1993