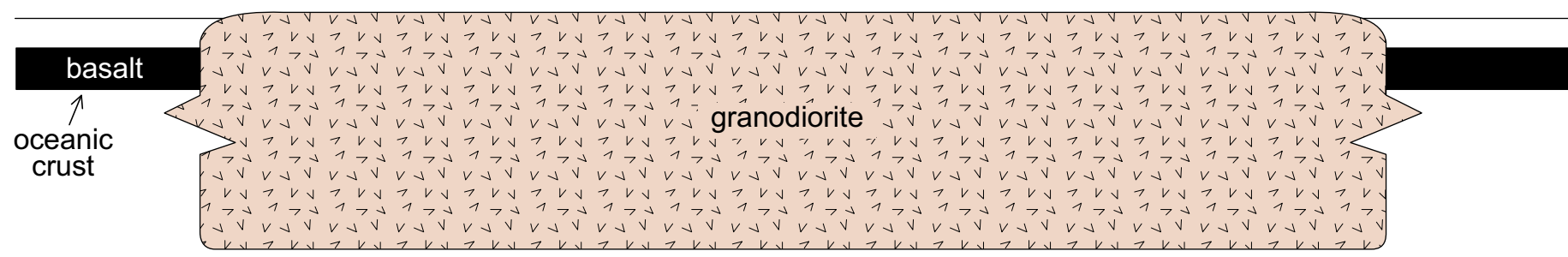
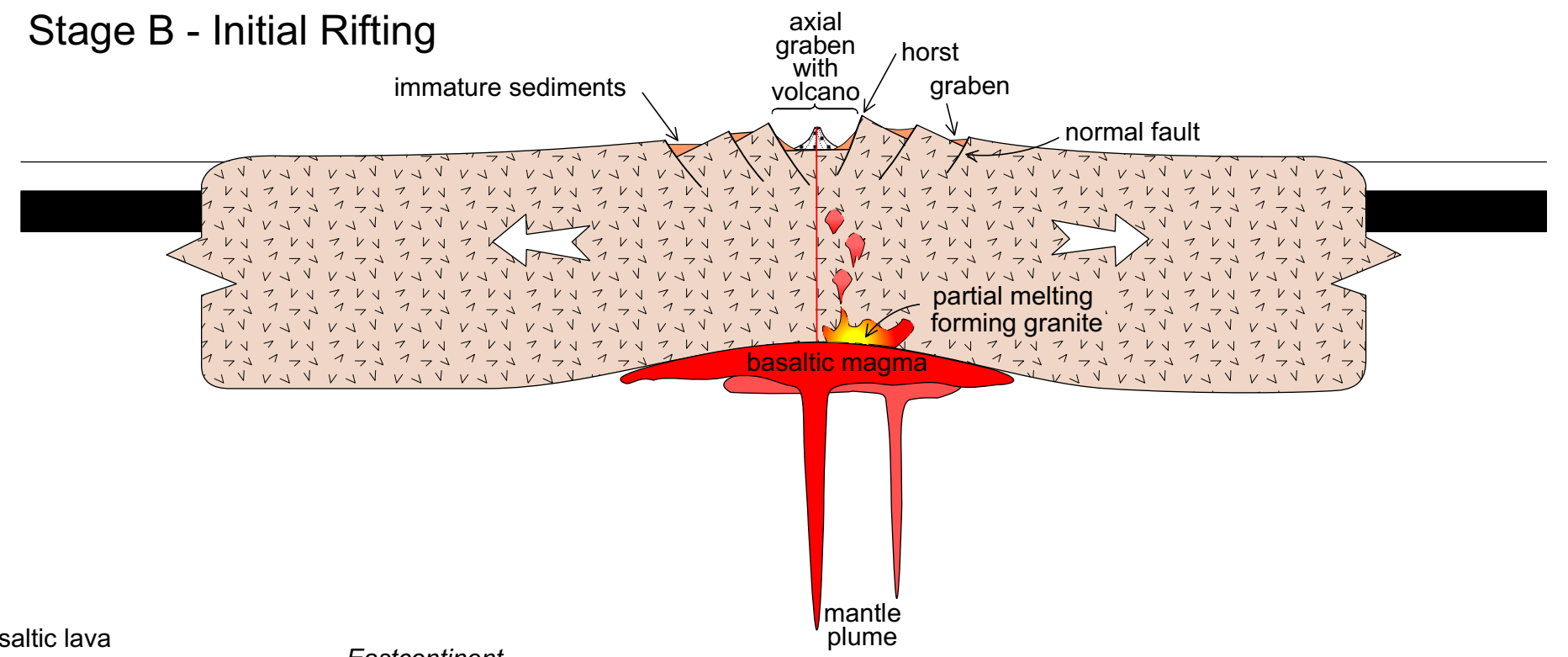


# A Wilson Cycle

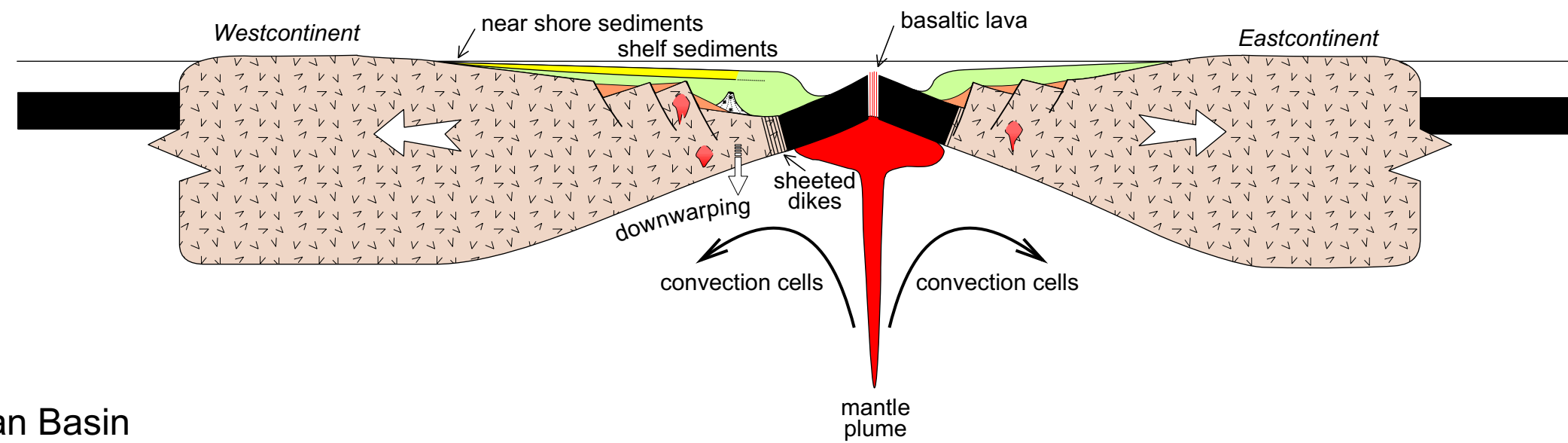
Stage A - Stable Continental Craton



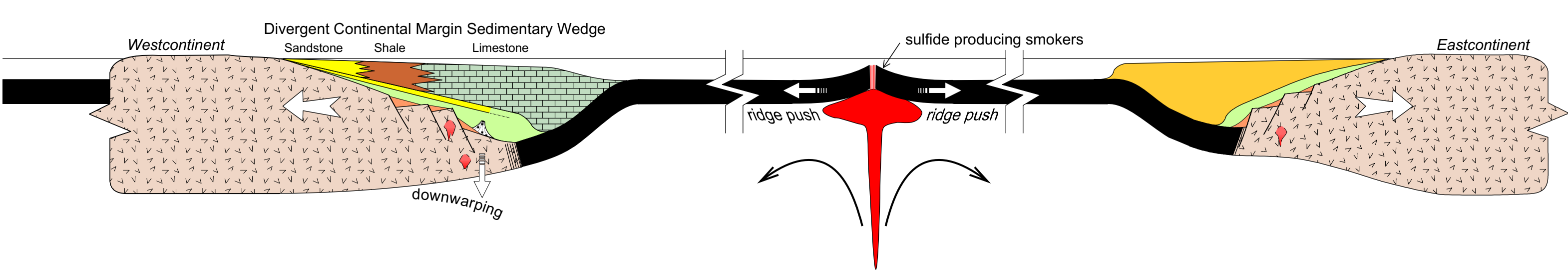
Stage B - Initial Rifting



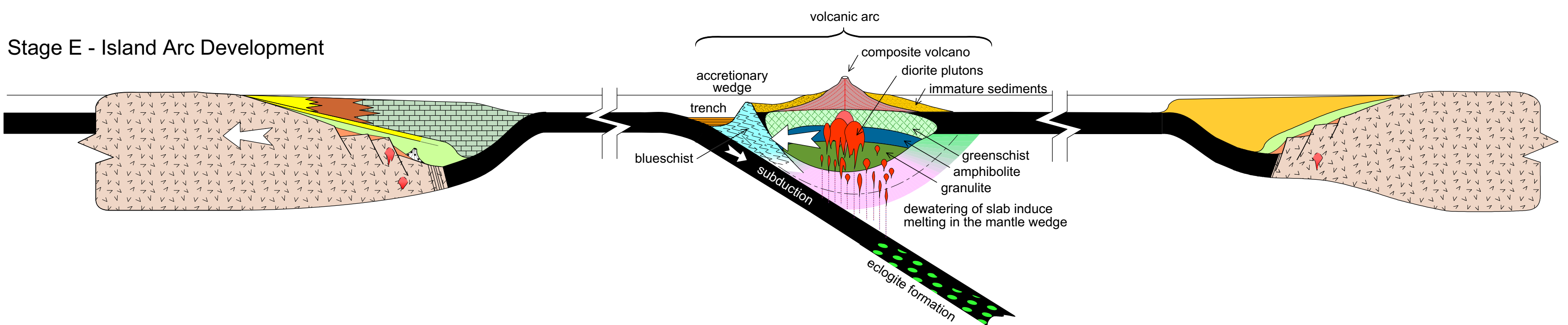
Stage C - Early Ocean Basin Formation



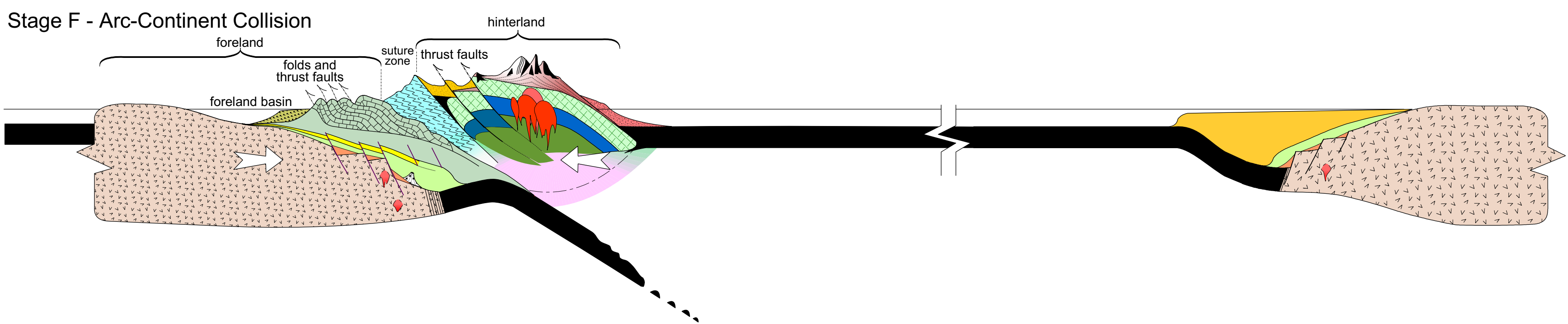
Stage D - Full Ocean Basin



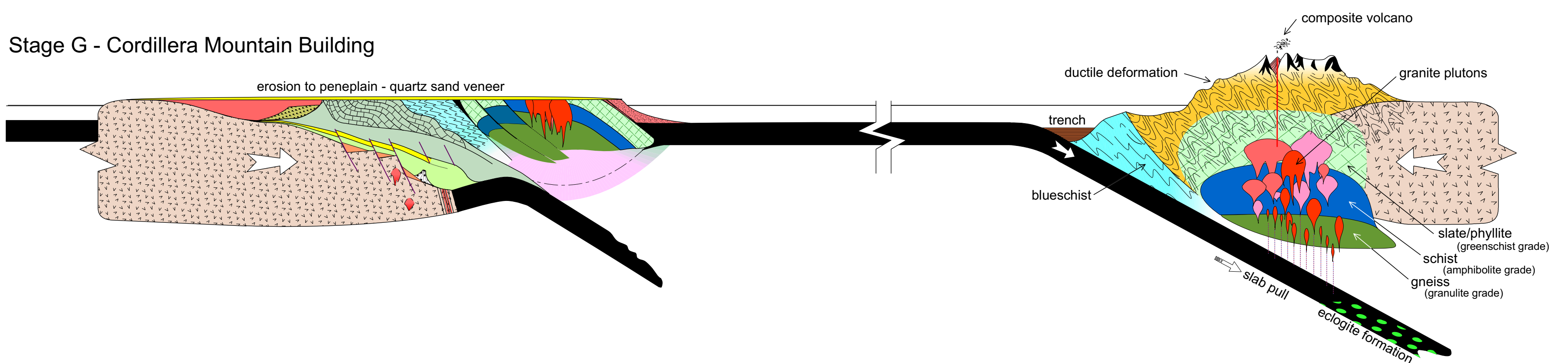
Stage E - Island Arc Development



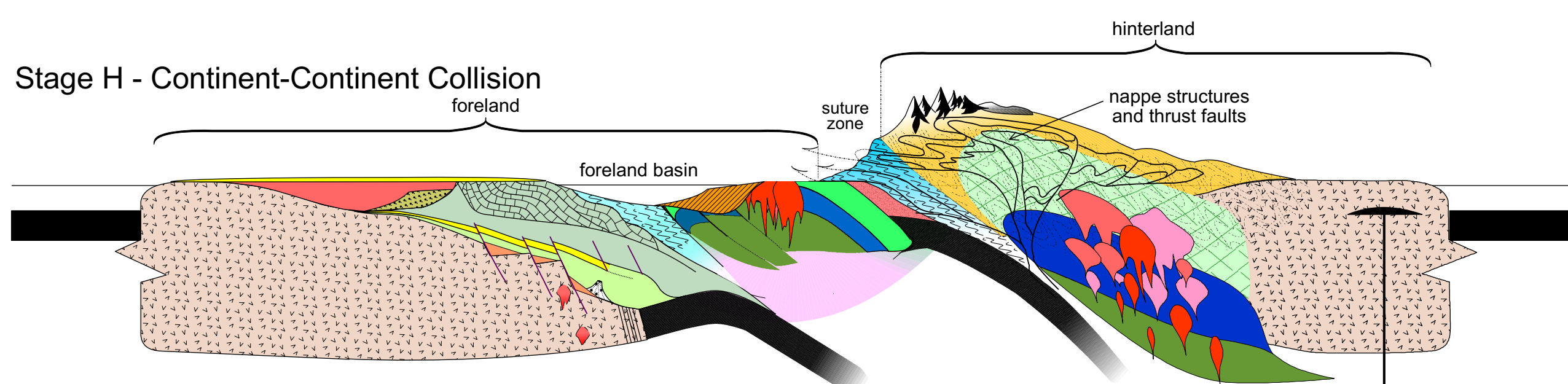
Stage F - Arc-Continent Collision



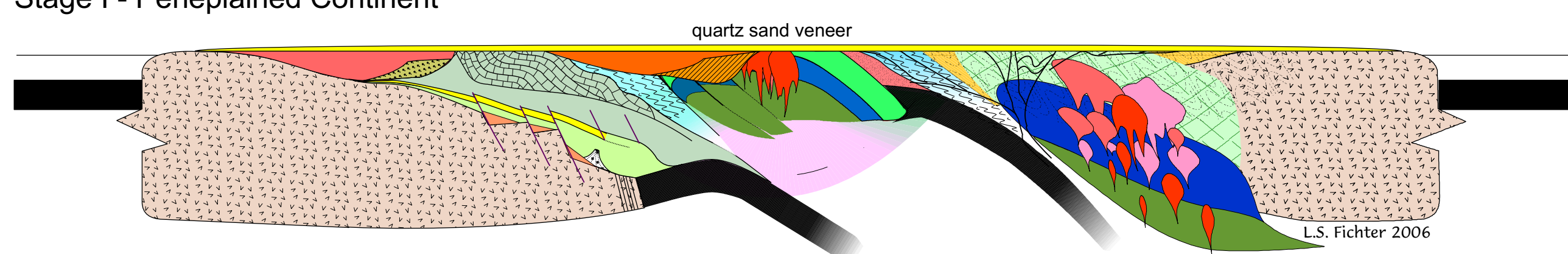
Stage G - Cordillera Mountain Building



Stage H - Continent-Continent Collision



Stage I - Peneplained Continent



L.S. Fichter 2006