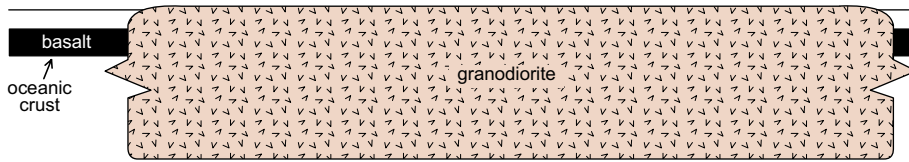
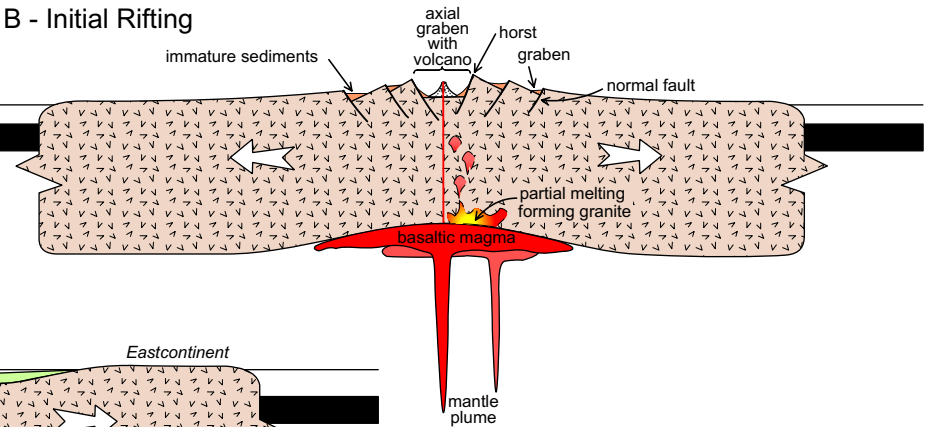


A Wilson Cycle - Page One

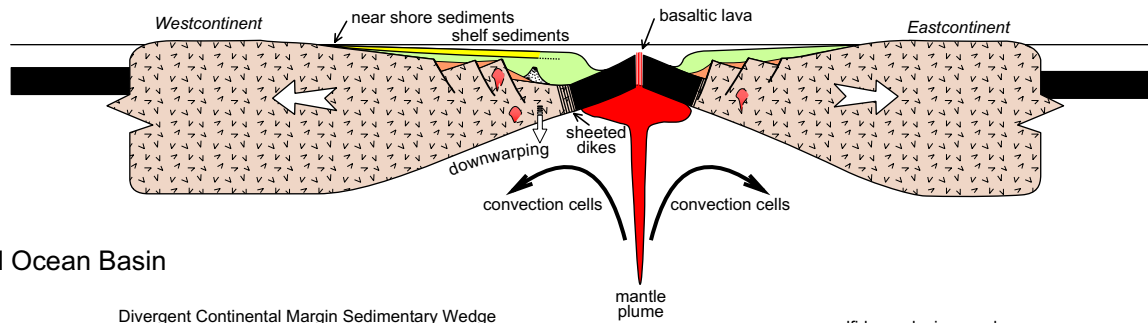
Stage A - Stable Continental Craton



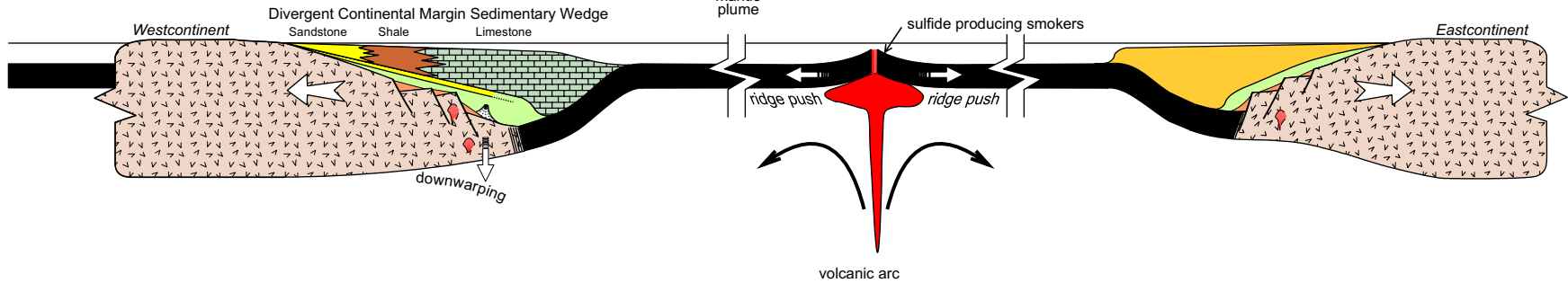
Stage B - Initial Rifting



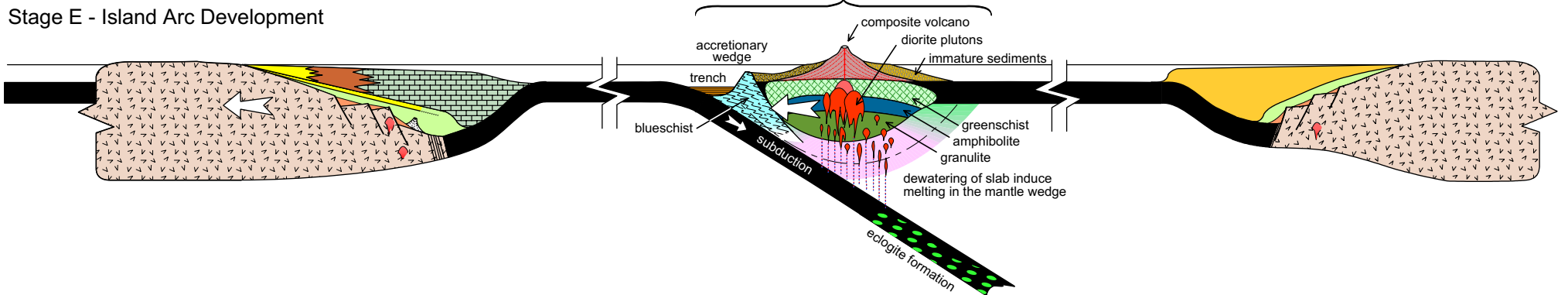
Stage C - Early Ocean Basin Formation



Stage D - Full Ocean Basin

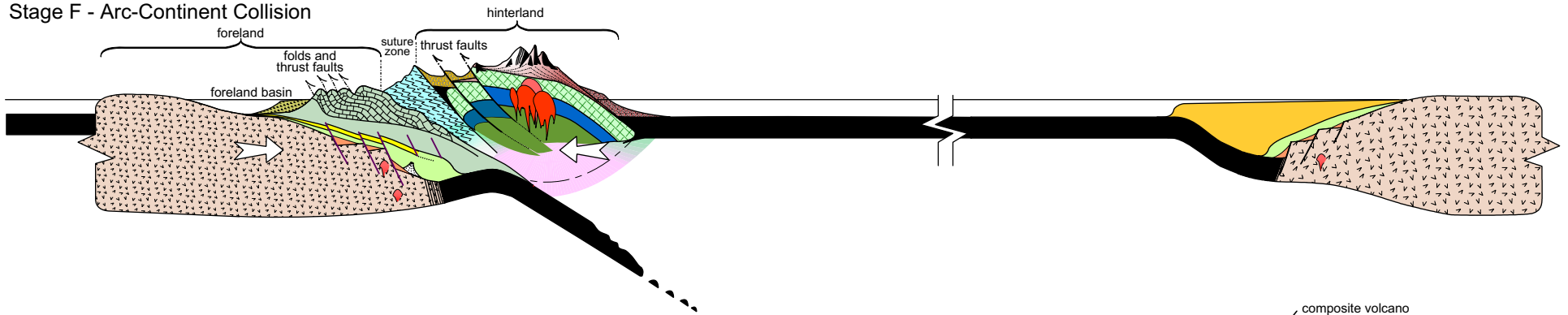


Stage E - Island Arc Development

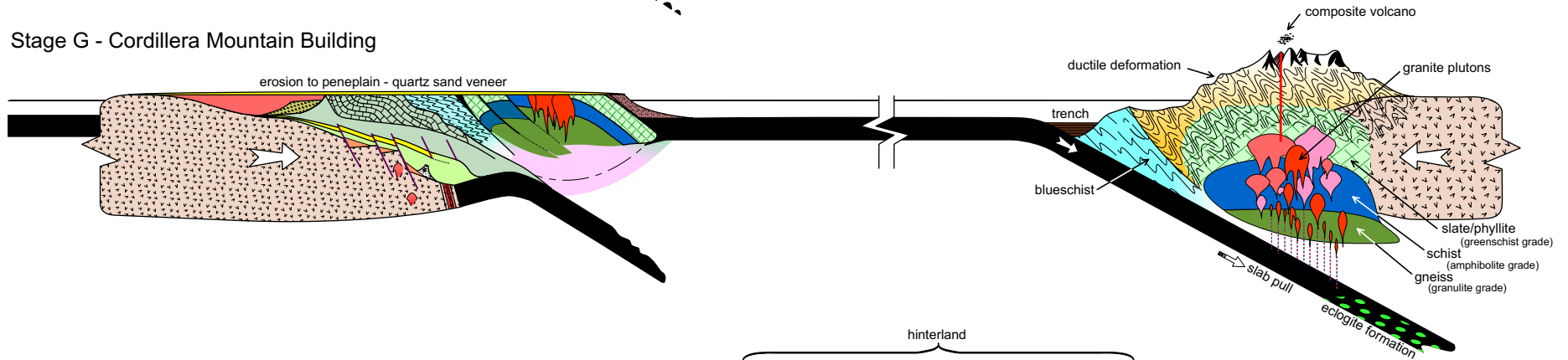


A Wilson Cycle - Page Two

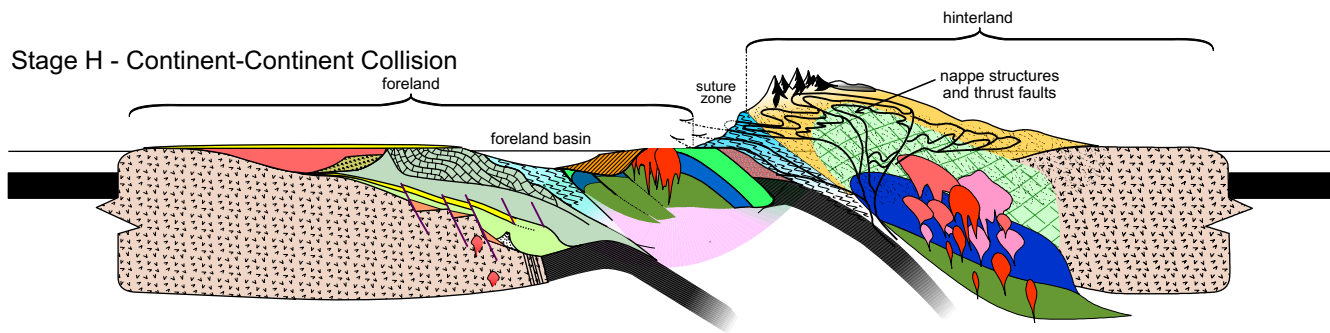
Stage F - Arc-Continent Collision



Stage G - Cordillera Mountain Building



Stage H - Continent-Continent Collision



Stage I - Peneplained Continent

